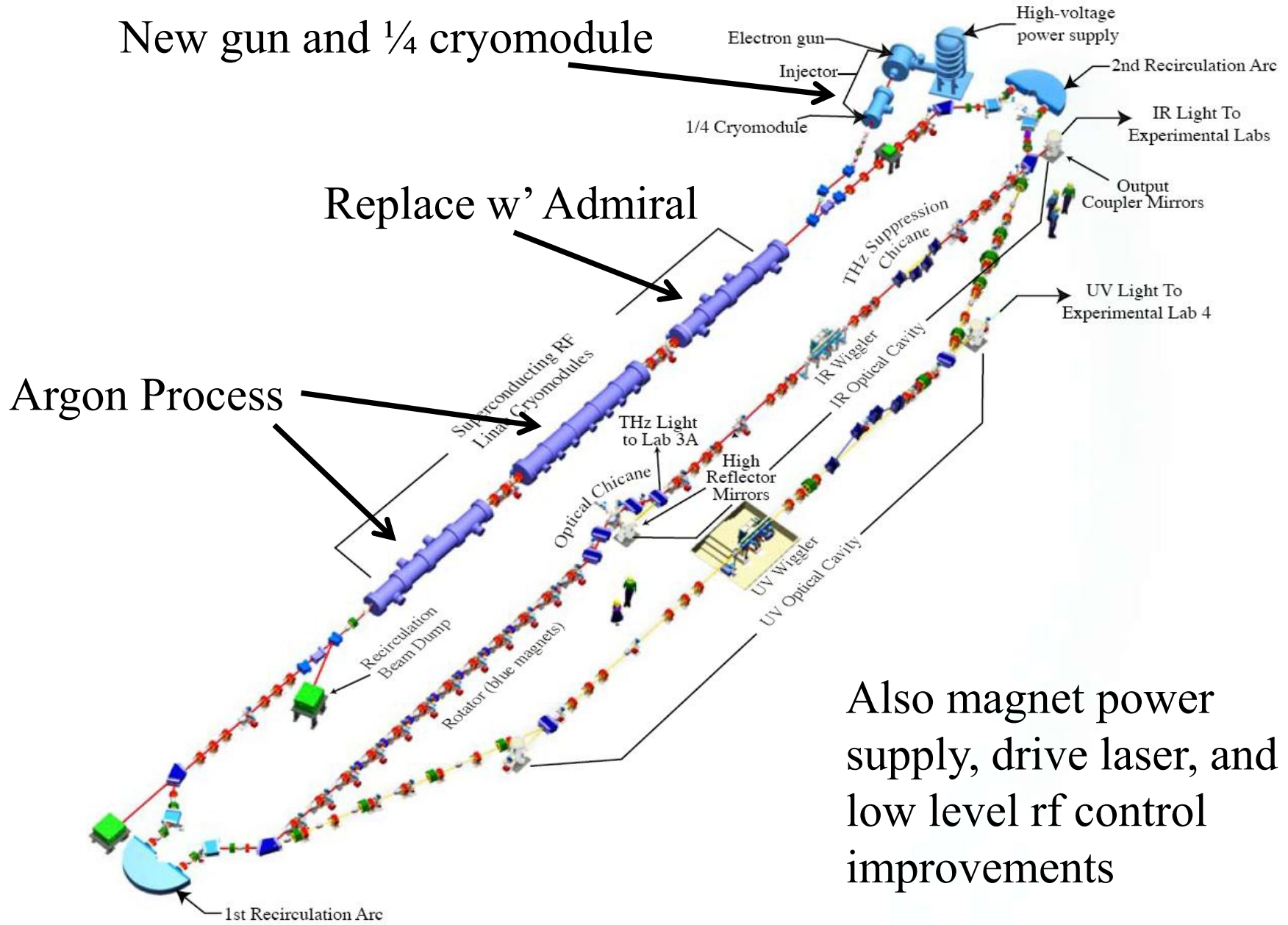


JLab FEL Overview

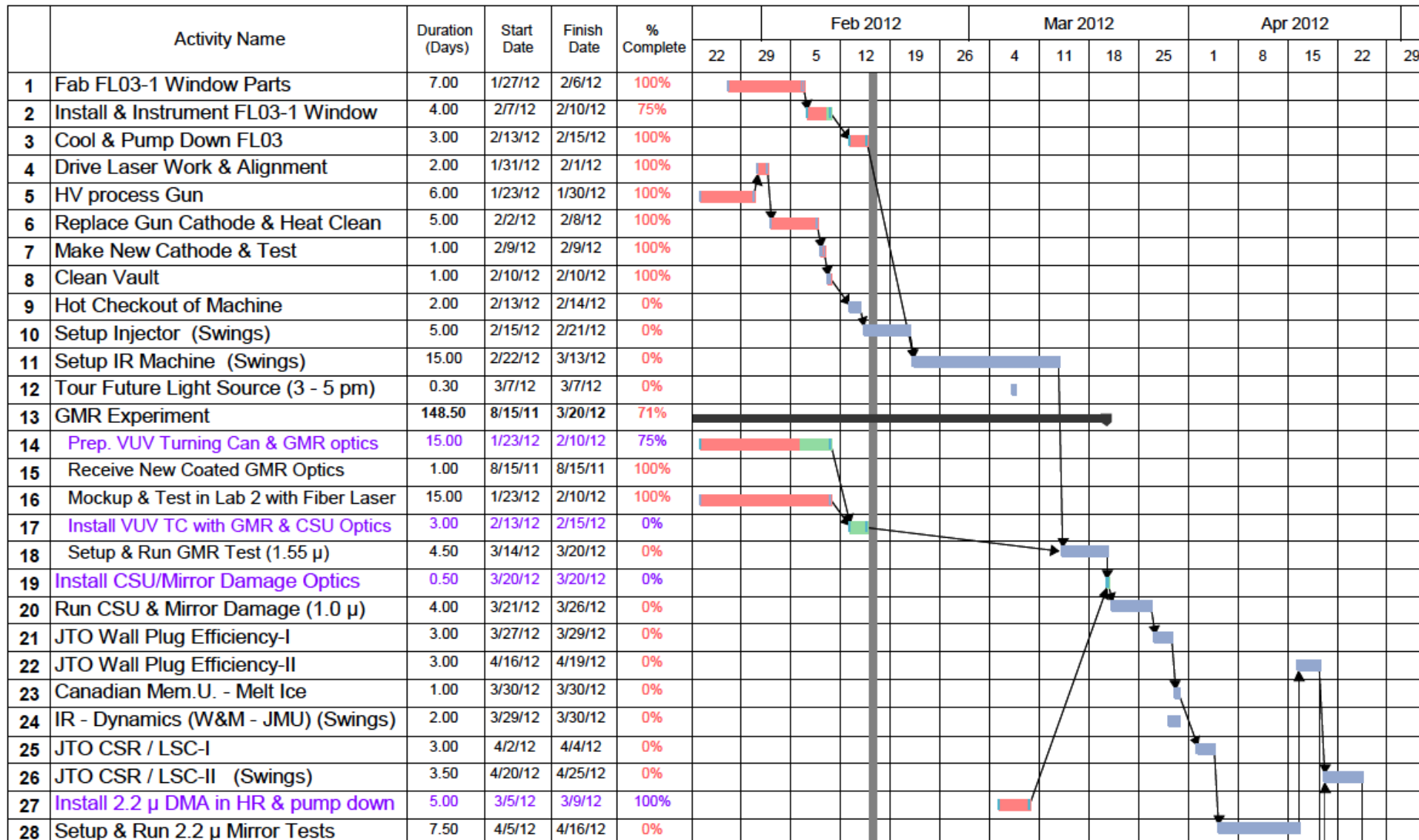
- Run Ops until July 31.
 - IR-FEL in March/April/May.
 - UV-FEL in May/June.
requires vacuum/alignment help
 - Darklight (NP) in July.
requires vacuum/alignment help
- In parallel refurbish Admiral as new C-100. (*srf help*)
- Starting August 1 until December 31.
 - install Admiral, Ar process FEL03/04 (*srf*)
 - remove existing gun, quarter, install new gun, new cryo unit tbd
*requires vacuum/alignment/mechanical/
cryo/electrical*

JLab FEL Upgrades Locations

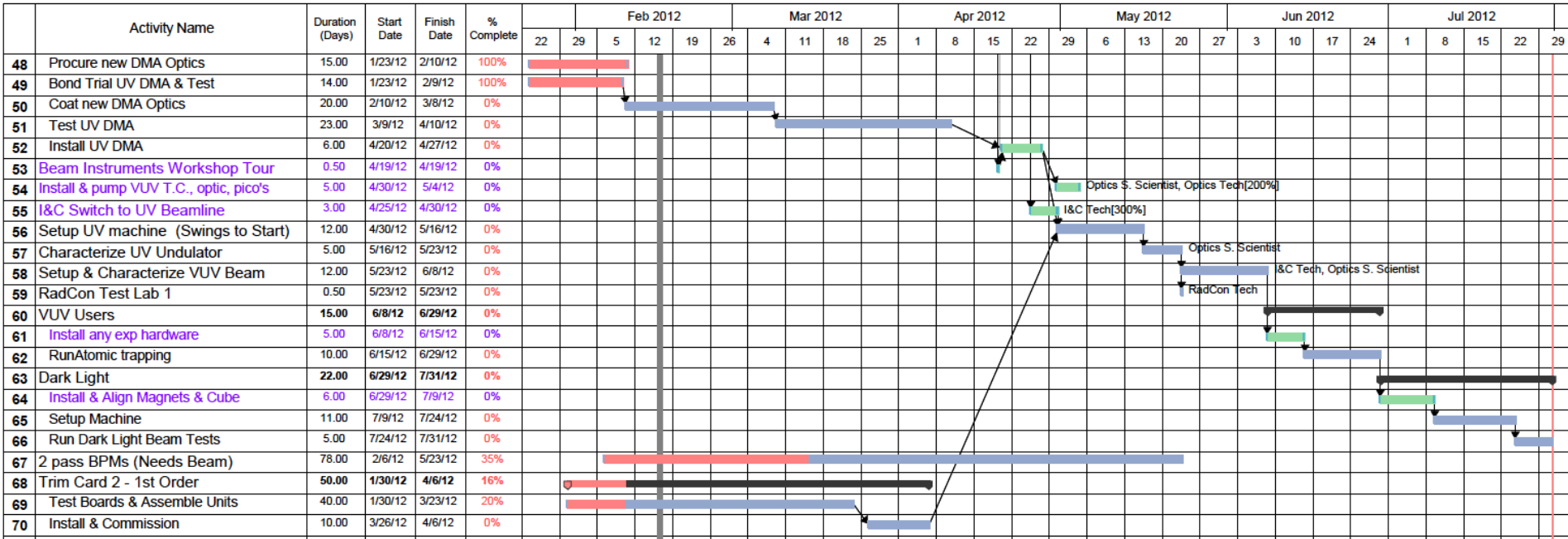
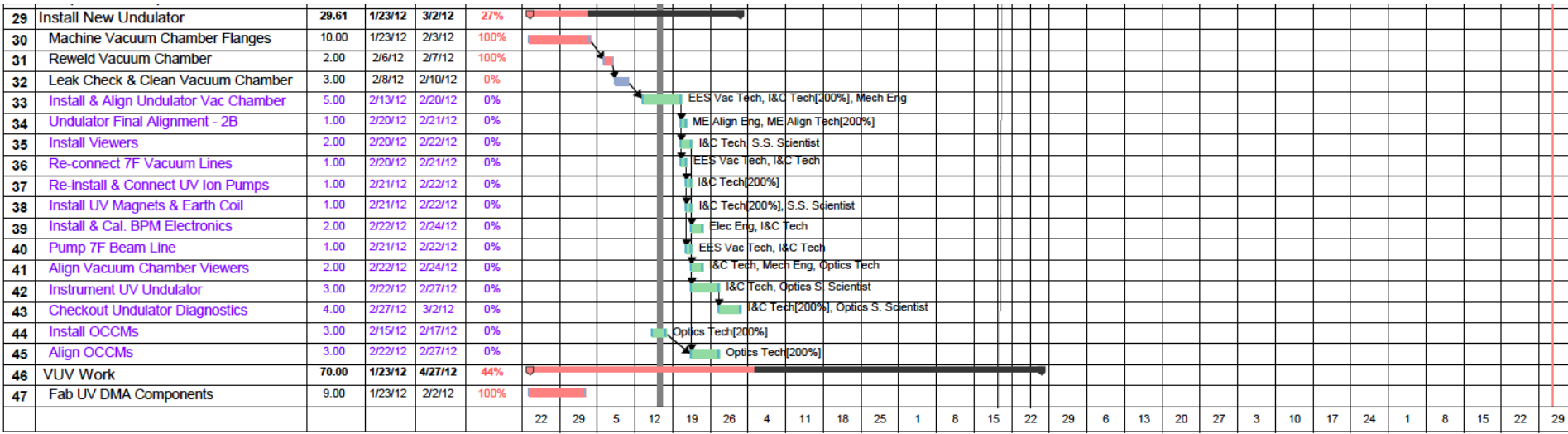


Also magnet power supply, drive laser, and low level rf control improvements

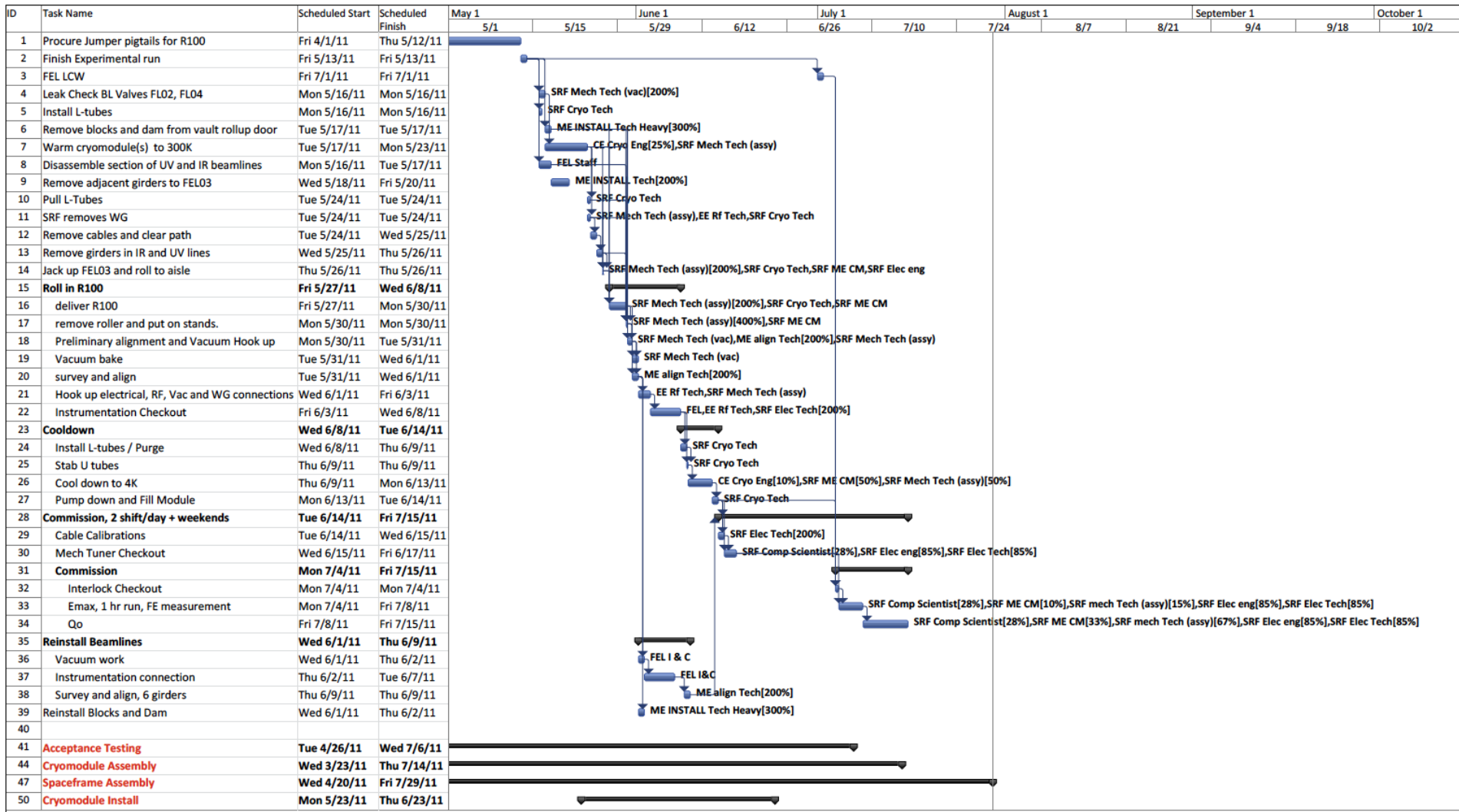
The IR Run



The UV/Darklight Run



Detail of R-100 Swap Plan – Admiral is similar



	A	B	C	D
1	Task Heading	Responsibility		Notes & Questions
1	Task Heading	Responsibility		Notes & Questions
2		Group	Person	
3	Schedule development	FEL	?????	
4	Engineering/Changes			Does anything change, if so who is doing the designs and coordinating this work. What is the schedule for completion & delivery of materials. Do the replacement/repaired CM need any wave guide alterations?
5	All			
6	Remove/Re-Install Shielding Blocks	MSINST-Inst	Neil Wilson	Need crane, 1 week notice normal for scheduling
7	Remove/Re-Install Interferences	MSINST-Vac & Inst	Neil Wilson	This line item is for the path out common for all equipment. A list needs to be developed identifying the specific components.
8	Electrical & Instrumentation Disconnection	FEL		
9	Girder, Vac. & Mech	MSINST	Wilson & Heckman	
10	Magnet, Vac. & Mech	MSINST	Wilson & Heckman	
11	Cryo Line for Cryo cooled mirror	Cryo		Is enough flexibility in the coupling to permit this being moved around, how much & how many times?
12	Optical Beam Line - UV	FEL	Gubeli?	
13				
14				
15	CM Removal & Re-Installation Each Module	SRF	Dury??	
16	Warm Up CM if not already warm	SRF, Cryo		?? / If already warm does anything have to be done while being warmed up. i.e.- like pumping on the beam line????
17	Leak check CM vacuum valves	Vac.		
18	Vent up warm region girders	Vac.		
19	Remove warm region girders	Inst		
20	Remove wave guides & disconnect all instrumentation & electronics	SRF, EESRF, EESI&C	Dury, Cooper, Garza,?	
21	Remove CM & transport to ?	SRF		Needs crane to load CM on transport trailer & truck to pull trailer. Who takes care of coordinating crane services.
22	Transport CM form ? & set in location	SRF		Needs crane to unload CM on transport trailer & truck to pull trailer. Who takes care of coordinating crane services.
23	2A Align CM	S&A		
24	Reconnect wave guides & re-connect all instrumentation & electronics	SRF, EESRF, EESI&C	Dury, Cooper, Garza,?	
25	Re-install warm region girders	Inst		
26	2A Align warm region girders	S&A		
27	Pump down, bake out & leak check warm region girders	Vac.		
28				
29				
30				
31				
32				
33	1/4 Work			
34	1/4 Removal & Re-installation of interferences	MSINST	Wilson & Heckman	Need to identify list of components. I know the GW & sextupole, 3 or 4 girders down beam of the GW. I would suggest we take a hard look at this so we don't remove more than we have to. We also need to understand if there are any design changes to the 1/4. This may have unexpected consequences for the re-installation with interferences.
35	Pull back Cables & remove cable Tray?	FEL?	???	
36	Equipment Radiation Pb & Steel Shielding	FEL?, RADCON	???, Hamlette	
37	Warm Up 1/4 CM if not already warm	SRF, Cryo		?? / If already warm does anything have to be done while being warmed up. i.e.- like pumping on the beam line????
38	Leak check CM vacuum valves	Vac.		
39	Vent up warm region girders	Vac.		
40	Remove warm region girders	Inst		
41	Remove wave guides & disconnect all instrumentation & electronics	SRF, EESRF, EESI&C	Dury, Cooper, Garza,?	
42	Remove 1/4 CM & transport to ?	SRF		Needs crane to load CM on transport trailer & truck to pull trailer. Who takes care of coordinating crane services.
	1/4 removal & Re-installation specific ??? That need to be answered			This work requires the custom built spreader bar, trolley & chain fall. We might have a chain fall that works, we need to know the weight of the

Starting to work up cryounit swap worklist

